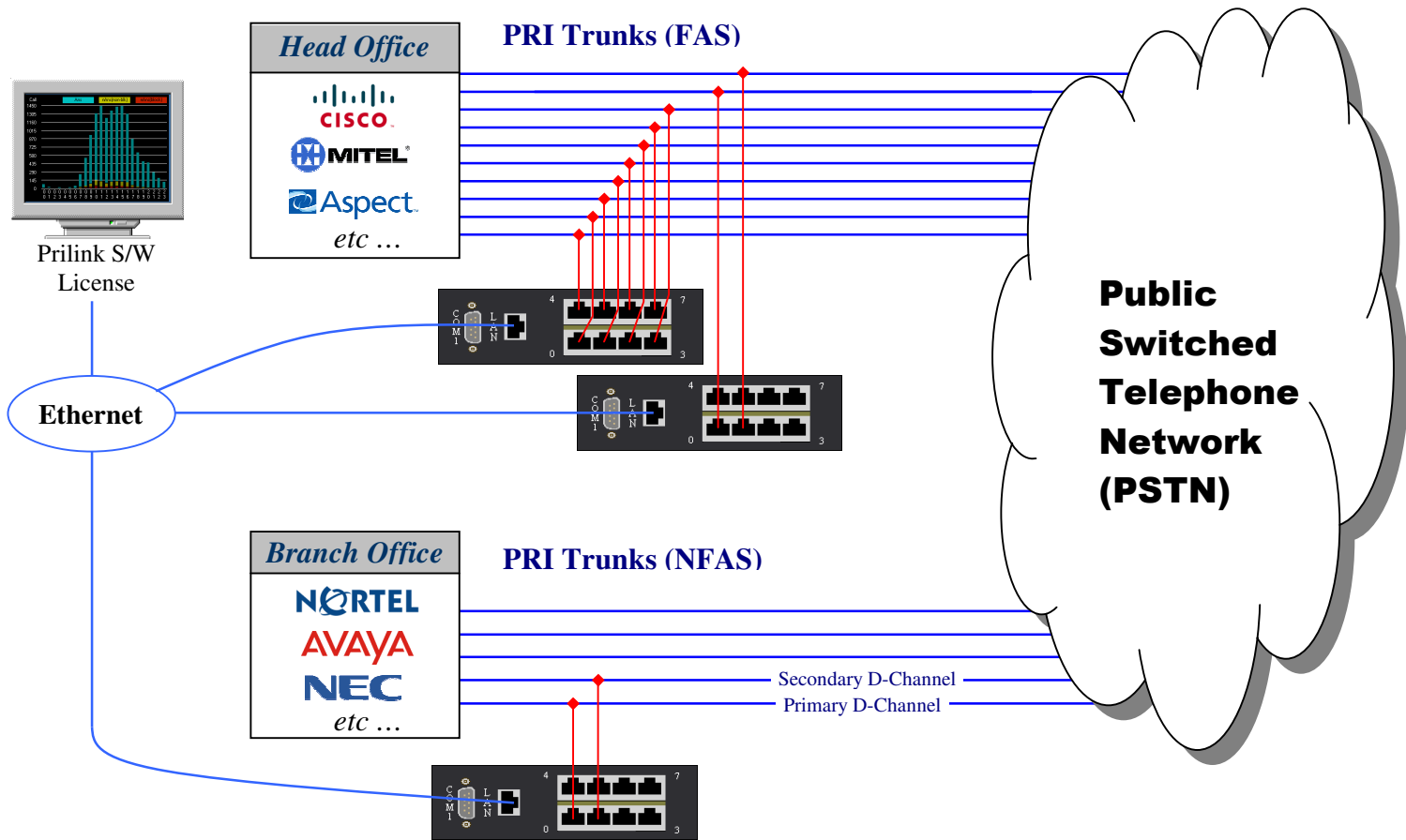




## What is PRILINK and what does it do?

- PRILINK is an easy to use and cost effective management tool for PSTN PRI networks.
- It can simultaneously monitor multiple PRI lines and perform traffic measurements in real-time **24/7/365**.
- Installation is fast and easy! Simply connect the Prilink hardware non-intrusively to the T1/E1 monitor jacks, and install PrilinkII software onto any Windows based PC.
- Hardware stores traffic and CDR data up to one year, eliminating database and other logistic costs.
- Telecom managers use Prilink to troubleshoot and take control of PRI networks, as reliable traffic and call details are accessible right from their PC.



### Prilink Hardware Unit

- Passive connection to T1/E1s.
- Connect up to 8 D channels (8 T1/E1 for FAS, 128 T1/E1 for NFAS).
- Remote software control through LAN, direct serial cable or external modem.
- PrilinkII software license can connect to up to 64 units simultaneously.

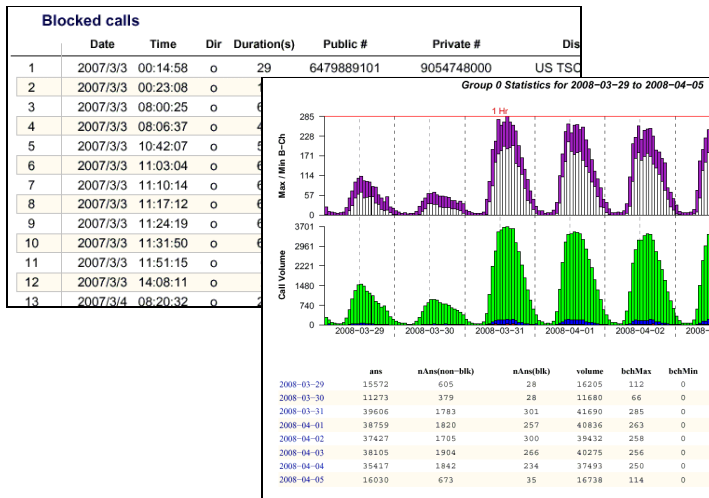


Dim 10" × 7.5" × 1.75"  
(25.4cm × 19cm × 4.4cm)



## Instant Traffic Reports over any period of time ....

The Prilink system makes it easy to maintain years of traffic data without any additional equipment or any database knowledge required. At the click of a button, produce traffic reports that put you on an equal footing with your Carrier by providing independent measurements of your network usage and the quality of service delivered by the CO. Prilink eliminates the guesswork common in traditional traffic studies based on mathematical models.



## Expert Support

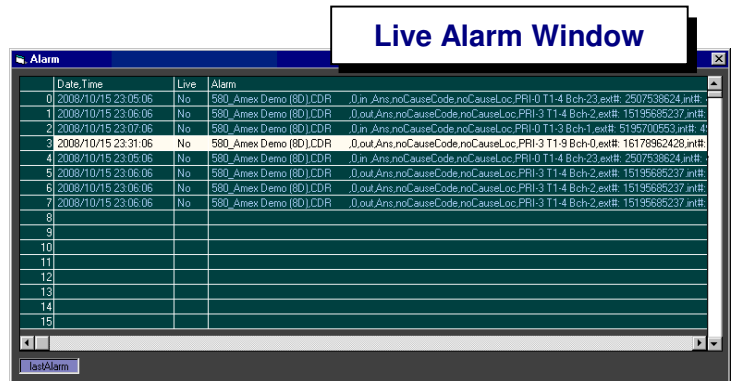
With innovative R&D and over a decade of experience serving many PRI customers, Prilink provides excellent ongoing customer support. Our support staff and developers are able to assist with integrating Prilink with a web server template that allows end users to access real-time PRI data through any web browser.

## CDR captures PRI details necessary for identifying problems and responding to customer enquiries ....

Quickly resolve telecom issues by determining the source of the problem directly from D-channel message based call details. Easily search through thousands of calls using powerful filter criteria. Each call detail record includes: call setup time and duration, T1/E1 and B-channel used, who hung up on who (Network, Remote User or PBX), CLID blocked by whom, call disconnect reason, PBX route, Network Facility, and other call diagnostics.

## Quick notification of Network alarms by Email ....

Respond proactively to service quality and availability issues before complaint calls begin. Prilink will alert you to sudden changes in traffic patterns, changes in D-channel status and health, T1/E1 failures or potential failures, and other undesirable network behaviours. Have alarms automatically e-mailed to any number of recipients the moment they are generated.



For more information contact us at: [info@prilink.com](mailto:info@prilink.com) or call 1-866-261-0649

**PRILINK Ltd.** [www.prilink.com](http://www.prilink.com) phone: 905-882-4488 fax: 905-882-4410