

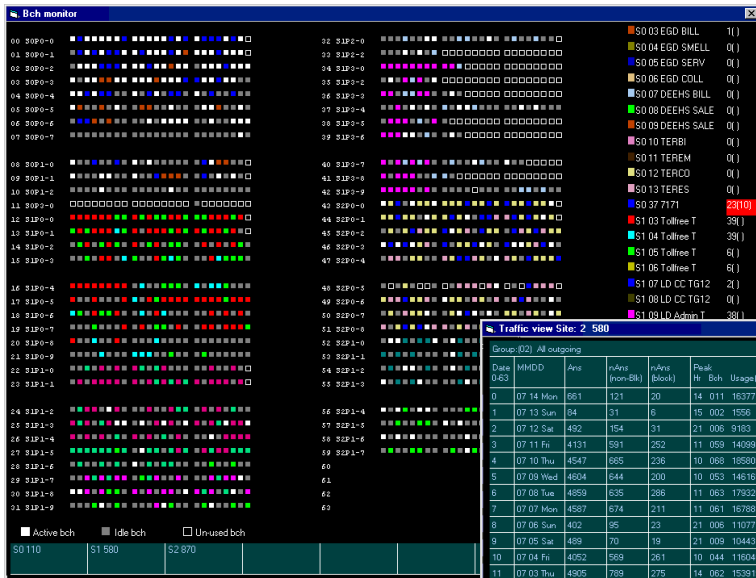
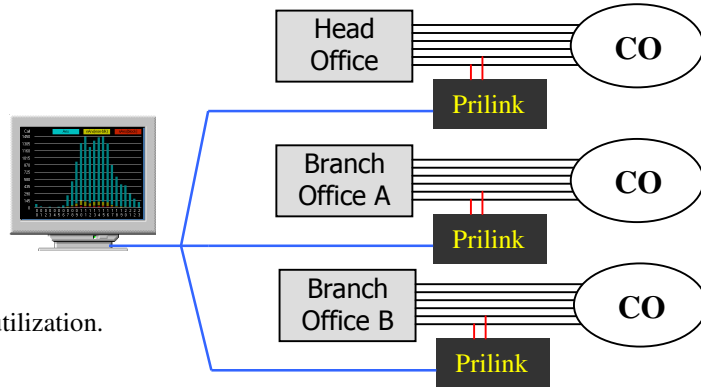
The **PRI Advanced Package** is for Telecom Managers who are frustrated by the investigation time and lack of information associated with PRI problems. By extracting raw data directly from the PRI D-channels and storing records for up to 400 days, managers can use their PC to *see* PRI activity and diagnostics during the problem time period. As the PRI Manager system is based on standard PRI protocols, managers can easily generate reports for any Telecom center around the world.

A single system can monitor up to 8 D-channels and 128 T1/E1s. A full system can monitor up to 2,000 D-channels and up to 32,000 T1/E1s in a single location or multiple locations around the world.

The system is composed of software and hardware components. Software is an independent program designed to operate on any MS Windows based PC or server.

It can connect to 250 hardware units through dial-up or LAN, and can provide the following functions:

- ❑ PRI T1/E1 trunk provisioning scheme and utilization.
- ❑ Causes of not answered calls.
- ❑ PRI traffic statistics in real-time and for the last 64 days, broken down into incoming, outgoing and bi-directional traffic.
- ❑ Visual and Erlang-B detection of blocked traffic.
- ❑ User definable traffic Groups that match to business phone numbers and other criteria.
- ❑ Group traffic statistics in real-time and for the last 64 days.
- ❑ Mapping of traffic Groups to live B-channels. Identification of active, idle and bad/unused B-channels.

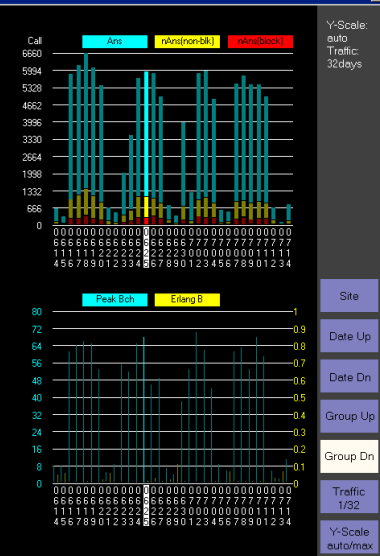


Traffic view Site: 2 580

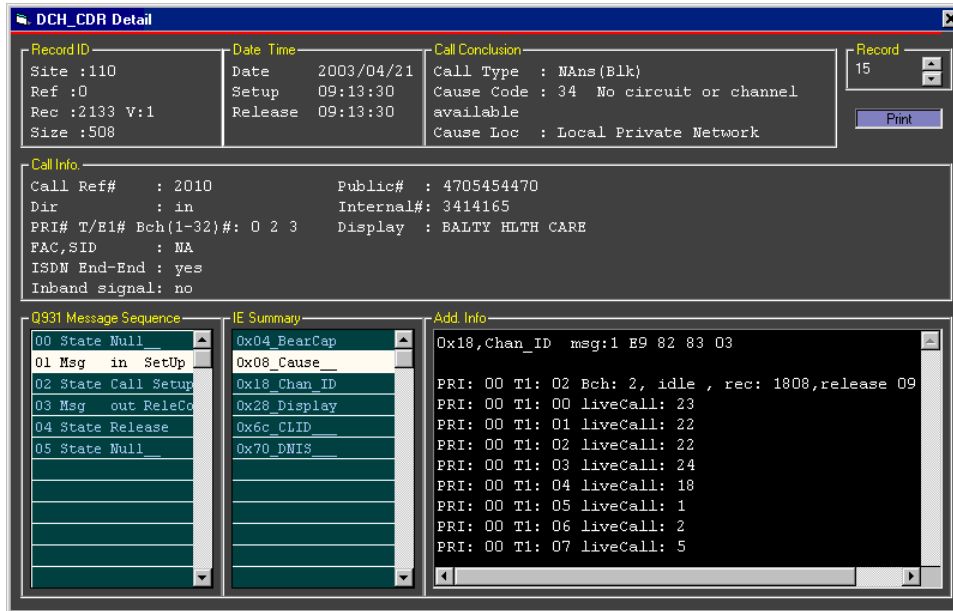
Date (MDD)	Ans	rlnt (non-bk)	rlnt (blk)	Peak Hr: Bch	Usage(s)	Erlang B
0 07 14 Mon	661	121	20	14 011	16377	0.00
1 07 13 Sun	84	31	6	15 002	1956	0.07
2 07 12 Sat	452	154	31	21 009	9183	0.03
3 07 11 Fri	4131	591	252	11 059	140986	0.00
4 07 10 Thu	4547	665	236	10 069	196809	0.01
5 07 09 Wed	4604	644	200	10 053	146195	0.01
6 07 08 Tue	4659	635	286	11 063	179328	0.01
7 07 07 Mon	4587	674	211	11 061	167893	0.01
8 07 06 Sun	402	95	23	21 006	11077	0.07
9 07 05 Sat	489	70	19	21 009	10443	0.00
10 07 04 Fri	4262	599	261	10 044	116046	0.01
11 07 03 Thu	4905	789	275	14 062	153919	0.00
12 07 02 Wed	4911	648	330	11 070	178323	0.00
13 07 01 Tue	1127	132	22	08 053	54011	0.00
14 06 30 Mon	3260	534	170	14 036	99272	0.01
15 06 29 Sun	338	52	15	00 004	6852	0.11
16 06 28 Sat	594	132	46	12 007	10488	0.02
17 06 27 Fri	4135	593	243	10 049	126169	0.01
18 06 26 Thu	4856	693	336	11 046	134544	0.03
19 06 25 Wed	4961	801	271	11 068	186358	0.01
20 06 24 Tue	4934	823	272	11 065	156442	0.00
21 06 23 Mon	2907	413	149	14 052	131276	0.00
22 06 22 Sun	1663	266	100	11 055	138404	0.00
23 06 21 Sat	400	89	6	21 009	9201	0.00
24 06 20 Fri	534	144	14	18 005	8158	0.06
25 06 19 Thu	4529	686	197	11 053	148301	0.02
26 06 18 Wed	4882	678	232	10 065	183006	0.00
27 06 17 Tue	5264	939	348	11 066	191202	0.01
28 06 16 Mon	5261	898	341	14 064	182400	0.00
29 06 15 Sun	4680	740	234	11 061	196371	0.00
30 06 14 Sat	207	43	4	21 008	19391	0.06

PRI view Site: 2 580

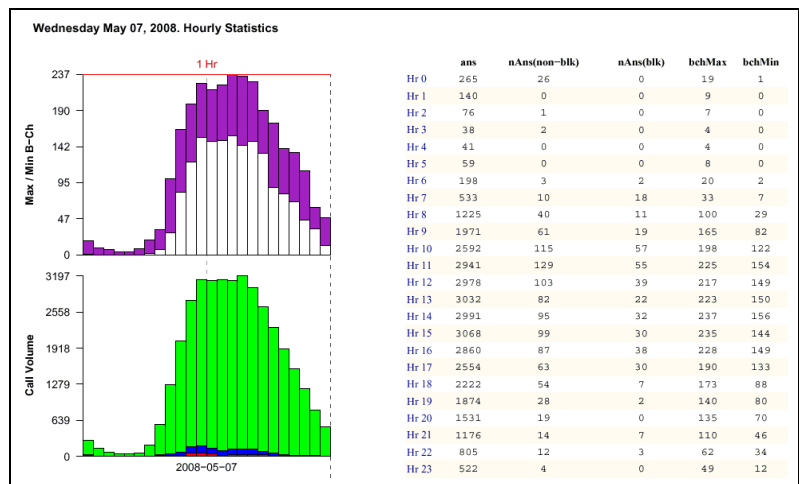
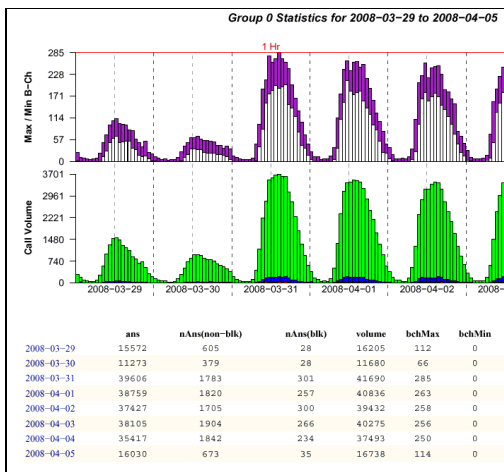
PRI	Date & Time	Port 0	Port 1	U-Frame	S-Frame	U-Frame	Error	Cause code	Incoming Ans	Incoming Not ans	Outgoing Ans	Outgoing Not ans
00	(1) Fri 2008/07/04 00:00:00-23:59:59	Allstream Tollfree TG21 Pki	Allstream Tollfree TG21 Sex					C.C. 1	0	0	0	1
01								C.C. 16	46561	843	21215	3263
02								C.C. 17	0	635	1	12654
03								C.C. 18	0	0	0	8
04								C.C. 19	0	0	0	13
05								C.C. 21	0	1	0	1
06								C.C. 28	0	0	0	109
07								C.C. 31	0	0	1901	23
08								C.C. 34	0	0	1	19
09								C.C. 42	5	5	0	6
10								C.C. 44	0	0	0	5
11								C.C. 47	0	0	3	5
12								C.C. 63	0	0	0	1
13								C.C. 79	0	0	0	1
14								C.C. 81	0	0	0	4
15								C.C. 127	2	0	0	242
Total									46568 (97.11%)	1384 (2.89%)	23121 (58.57%)	16395 (41.43%)



- ❑ Real-time decoding of Q931 protocol for call troubleshooting or verification of PRI provisioning.
- ❑ Configurable alarms for traffic Groups based on B-channel threshold.
- ❑ Alarms for loss of D-channel and T1/E1 failures.
- ❑ Automatic delivery of alarms via Email.
- ❑ Automatic traffic measurement for all extensions and PBX routes.
- ❑ Call detail records (CDR) that include the full Q931 message sequence and traffic summary for blocked calls. Users can identify the cause of call blockage, who initiated call blockage and the trunk traffic background.



- ❑ Up to 400 days data stored locally, and data can be downloaded into a user PC or server to extend storage.
 - ❑ Data can be exported for report generation, such as PRI operation summary, caller identification, call patterns, etc..
- Standardized reports are exported to text files for easy integration to any report process.



Prilink Hardware Unit

- Passive connection to T1/E1s.
- Connect up to 8 D channels (8 T1/E1 for FAS, 128 T1/E1 for NFAS).
- Remote software control through LAN, direct serial cable or external modem.
- AC-DC power adapter conformed to international standards. 110/240v.
- Environmental friendly design that requires less than 20W to operate and no heat exhaust fan.



Dim 10" × 7.5" × 1.75"
(25.4cm × 19cm × 4.4cm)